



## GX340

### Your advantages



The 21" GX340 black and white monitor brings perfect picture quality with a precise brightness characteristic and 3 megapixel resolution. EIZO relies on LED technology for consistently achieving a stable brightness. EIZO guarantees a brightness of 500 cd/m<sup>2</sup> over a 5 year period without limiting operating time. This value significantly exceeds the requirements for examinations defined in the quality assurance directive (QS-RL). The result is a safe investment and saves extra costs. With a 14bit LUT (Look-Up-Table), images of the chest area or fine skull structures or limbs are displayed perfectly on this monitor. Hence a radiologist sees the image in the quality necessary to make a flawless diagnosis – over a long period of time.

- ✓ 3 megapixel LCD module with LED backlight for reliably high and permanently stable brightness
- ✓ Pallet with 68 billion colour tones for precise colour rendering up to 10 bit
- ✓ Automatic control of the luminance distribution (Digital Uniformity Equaliser)
- ✓ Prepares for calibration, acceptance and constancy testing in accordance with DIN 6868-157, and quality assurance guidelines
- ✓ Hybrid gamma, fully automatic selection of the tone value curve for images that require different luminance characteristics.
- ✓ Integrated sensor for automatic and exact calibration
- ✓ Light sensor to measure the ambient light at the diagnostic station
- ✓ Presence sensor for immediate readiness when there is someone in front of the screen

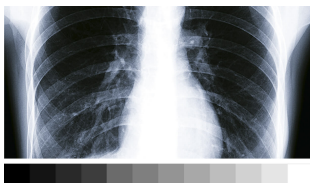
## Features

### Excellent image quality for the finest details

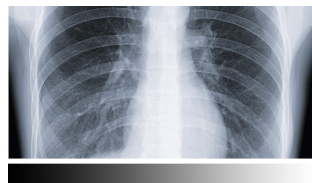
Thanks to the high 3 Megapixels (greyscale) resolution, a strong contrast ratio of 1400:1 and stable brightness of up to 1200 cd/m<sup>2</sup>, the monitor offers excellent image quality. Even the differences between the finest details are shown – regardless of your viewing angle. This is a great advantage if multiple physicians are looking at the screen.

### Correct rendering of grey tones

The grey tone rendering is controlled by an internal 14 bit look-up table (LUT), enabling a pallet of 16369 tones of grey. This makes calibration (e.g. DICOM<sup>®</sup> characteristic curve) and control of the luminance distribution possible without losses. Up to 1024 tones of grey can be displayed simultaneously with a suitable DisplayPort signal.



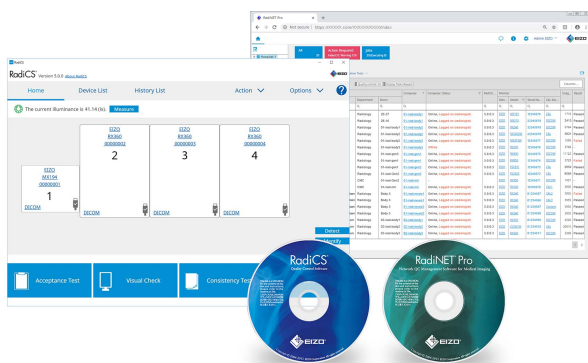
Without 14 bit LUT



With 14 bit LUT

### Consistently secure image quality

The optional EIZO RadiCS software to secure image quality enables extensive maintenance and testing of monitors and includes calibration, acceptance and consistency testing, and the



archiving of all areas. If you are working on multiple stations, the use of the RadiNET Pro is recommended. This can be used to centrally control the calibration of all monitors, including data

history. This saves you a significant amount of time and ensures consistently high image quality across the entire setup. The basic version RadiCS LE is already included with the RadiForce GX, RX, and MX/MS models.

[Learn more about the RadiCS application classes](#)

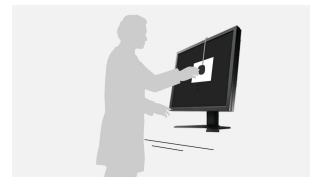
[Learn more about RadiCS LE software \(included in the delivery\)](#)

[Learn more about RadiCS software \(optionally available\)](#)

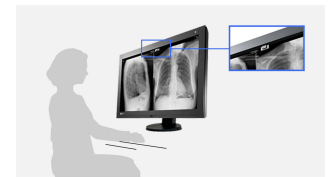
[Learn more about RadiNet Pro software \(optionally available\)](#)

### Balanced image quality thanks to an integrated front sensor

The precise calibration of white point and tone value characteristic curve is provided by an integrated front sensor (IFS). This measures the brightness and greyscales and calibrates the monitor autonomously according to the DICOM<sup>®</sup> standard. The sensor works automatically, without restricting the field of vision of the monitor. You can save the costs, time, and effort of maintenance and rely on a consistently balanced image quality.



Without IFS



With IFS

### Secure image quality thanks to AAPM/Euref/DIN compliance

The display properties, in particular brightness and contrast, are suited to the creation of image rendering systems compliant with DIN 6868-157. The DICOM<sup>®</sup> GSDF characteristic is already precisely configured in the factory. This means that greyscales are consistent, which is vital for diagnostics.

[Overview RadiCS application classes I to VIII](#)



## Features

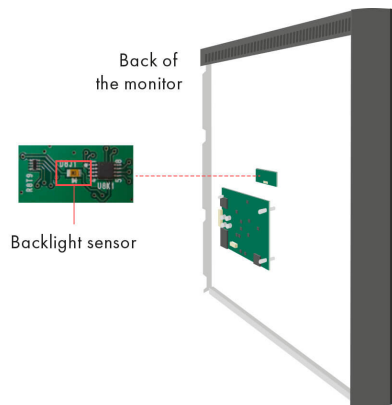
### Uniform brightness over the entire screen

The monitor shines thanks to its uniform illumination. This is down to the Digital Uniformity Equaliser (DUE), which corrects imbalances automatically, pixel by pixel. Grey tones of radiological and other medical images are correctly rendered over the entire display. This is vital for diagnostics.



### Constant brightness during operation

A sensor for the backlight permanently determines the luminance of the monitor. The benefit: The defined and calibrated values are rendered exactly just seconds after the monitor is turned on and remain constant during the entire period of use. The sensor is invisibly integrated in the monitor.



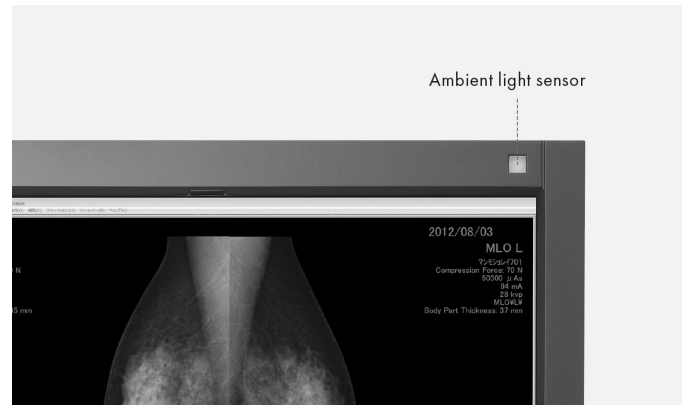
### Reliable brightness

EIZO is convinced of the quality of its products. The warranty for the monitors, therefore, also covers the brightness stability.



### Ambient light sensor supports the constancy test

The sensor integrated in the monitor is used to measure the ambient light and can be used for constancy tests. The prevalent illumination can be determined by the ambient light sensor with the optional RadiCS software.



### Modern LED backlight

The monitor has a modern LED backlight. This has several advantages over a conventional CCFL tube: the brightness remains uniformly high, electricity consumption is low, and the service life is significantly longer. The LED backlight is also free from mercury, making it environmentally friendly when disposed of.



### Extended durations of use thanks to automatic shut down

The monitor has an automatic shut down option for the backlight (backlight saver). This extends the duration of use. Similar to a screen saver, the LEDs turn off when the screen is not being used.

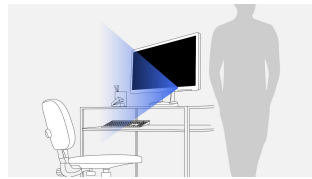
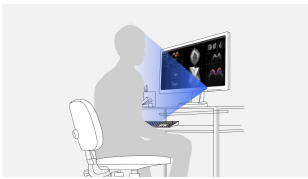
The backlight saver is part of the RadiCS software.

## Features

---

### Presence sensor: Save electricity when you are not in front of the monitor

Thanks to the presence sensor, you can save electricity and help protect the environment. The sensor registers whether someone is sitting in front of the screen or not. As soon as the person leaves the workstation, the monitor turns off automatically. When the person comes back, it turns back on – fully automatically, without touching the mouse or keyboard. It is always ready for use without a waiting period.



### Five-year warranty

EIZO grants a five-year warranty. This is possible thanks to the highly developed production process based on a simple principle of success: sophisticated and innovative monitor technology, made from high-end materials.



### One monitor, many ports

It doesn't get easier than this: You can connect most of your devices, such as PC, laptop or cameras directly to the monitor because the monitor has a number of different ports. That makes your daily work easier.

### Eye-friendly Comfort Light

EIZO offers a brand-new, easy-to-operate comfort light for radiologists who work in dark diagnosis rooms. The soft illuminance in the background of the screen reduces the strain on the eyes that frequently occurs due to constant light-dark changes between bright screens and objects in a dark environment.

[learn more about Radilight](#)



# Specification

## General

Item no.	GX340
Case colors	Black
Solutions	Medicine
Product line	RadiForce

## Display

RadiCS application classes	II, III, IV, V, VI, VII, VIII
Screen size [in inches]	21.3
Screen size [in cm]	54
Format	3:4
Viewable image size (width x height)	324 x 8
Resolution in MP	3 Megapixels (greyscale)
Ideal and recommended resolution	1536 x 2048
Pixel Pitch Horizontal [ mm ]	0.21 x 0.21
Panel technology	IPS
Max. viewing angle horizontal	176 °
Max. viewing angle vertical	176 °
Number of colors or greyscale	1024 grey scales (display port, 10 Bit), 256 grey scales (display port, 8 Bit), 256 grey scales (DVI, 8 Bit)
Max. brightness (typical) [in cd/m <sup>2</sup> ]	1200
Recommended Brightness Warranty	500
Factory-calibrated brightness [in cd/m <sup>2</sup> ]	500
Max. dark room contrast (typical)	1400:1
Backlight	LED

## Features

Color palette / look-up table	16,369 grey tones / 14 Bit
Hardware calibration of brightness and light density characteristic curve	✓
Digital Uniformity Equalizer	✓
Hybrid Gamma	✓
Preset colour/greyscale modes	DICOM, CAL1, CAL2, Hybrid Gamma, Text
DICOM tone curve	✓
Sensors	Ambient Light Sensor, Presence sensor
OSD language	de, en, fr, es, it, se, ja, zh
Adjustment options	Brightness, gamma, resolution, DICOM tone value characteristic, OSD language (de, uk, fr, es, it, jp, se, cn), interpolation, off timer
Signal inputs	1 x DisplayPort, 1 x DVI-D
Video Signal	DisplayPort, DVI (TMDS)
USB hub	1 Up- / 2 Down-Stream, Rev. 2.0

## Electric data

Power consumption (typical) [ in watt ]	36
Maximum Power Consumption [ in watt ]	90
Power Save Mode [ in watt ]	1.6
Power Consumption Off [ in watt ]	0
Power Supply	AC 100-120 V / 200-240 V, 50/60 Hz
Power Management	DVI-DMPM, DisplayPort Version 1.1a
Integrated power unit	✓

## Dimensions & Weights

Dimensions [ mm ]	376 x 520-599 x 245,5
Weight [ in kilograms ]	10.2
Weight Without Stand [ in kilograms ]	7.5
Swivel (right/left)	172 °
Incline forward/backward	0 ° / 30 °
Pivot	✓
Height Adjustment Range [ mm ]	79
Hole Spacing	VESA standard 100 x 100 mm

## Certification & Standards

Certification	CE (Medical Device Directive), EN 60601-1, UL60601-1, CSA C22.2 Nr. 601-1, IEC60601-1, VCCI-B, FCC-B, CAN ICES-3 (B), C-Tick, RoHS, WEEE, CCC, GOST-R
---------------	---

## Software & Accessories

Accompanying software and other accessories are available for download or on a CD	RadiCS LE, ScreenManager PRO Medical
Additional Supply	Power cord, Signal cable DisplayPort - DisplayPort, Signal cable DVI-D - DVI-D (dual link), USB 2.0 cable, EIZO LCD Utility Disk (incl. PDF manual)
Accessory	RadiCS (The RadiCS software provides extensive validations and automatic adjustment to ensure constant and consistent image reproduction on all RadiForce screens.), RadiNET Pro (EIZO software for network-based quality management in large facilities – with remote functionality for monitors), RadiLight (Comfort Light for Reading Rooms - Easily attachable light for RadiForce medical LCD monitors.)
Recommended graphics card	MED-XN71

## Warranty

Warranty and service	5 years including on-site replacement service*
----------------------	--

### Terms

\*) The length of the warranty for the product is five years from the date of purchase. In addition, the warranty includes the normal wear and tear of the backlight if it is operated at a recommended brightness of 500 cd/sq m. EIZO guarantees this brightness for the term of five years from the date of purchase.